



LUND
UNIVERSITY

SciLifeLab Lund

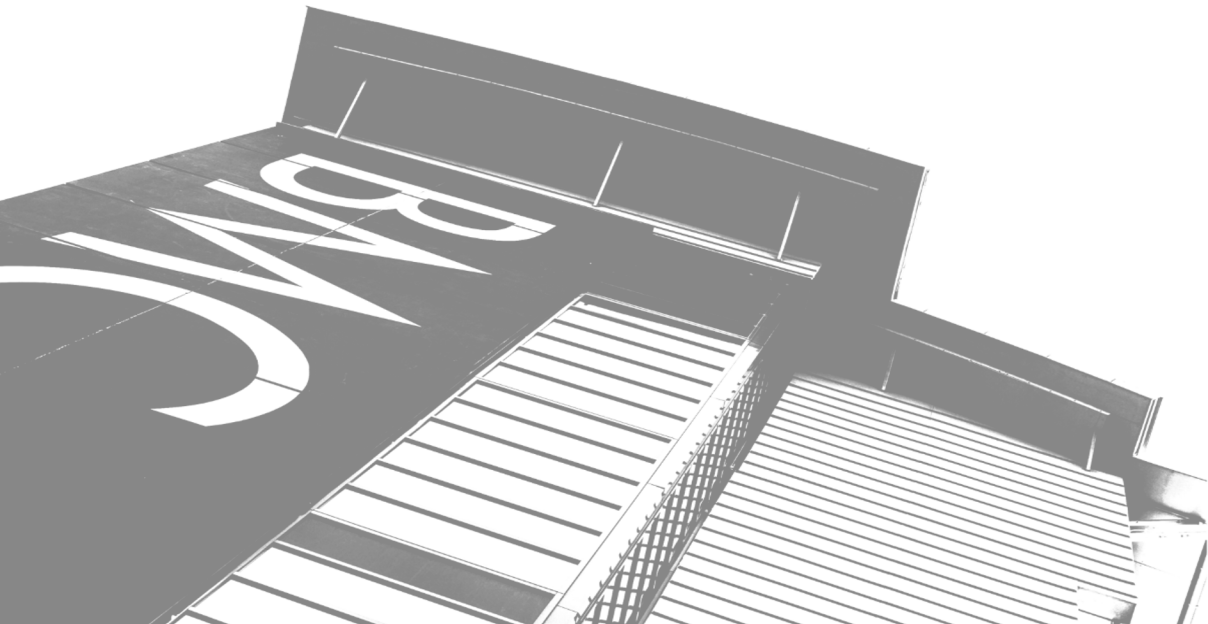
A hub for multi-level research
infrastructure collaborations

Esther González-Padilla

Site Coordinator, SciLifeLab Lund

Vice-Platform Coordination Officer, Clinical Genomics Platform

esther.gonzalez-padilla@scilifelab.se





What is SciLifeLab?

National hub focused on advancing molecular life science research in Sweden.

Vision

For Sweden to be a world-leading nation in life science.

Mission

Enable life science research that would otherwise not be possible.

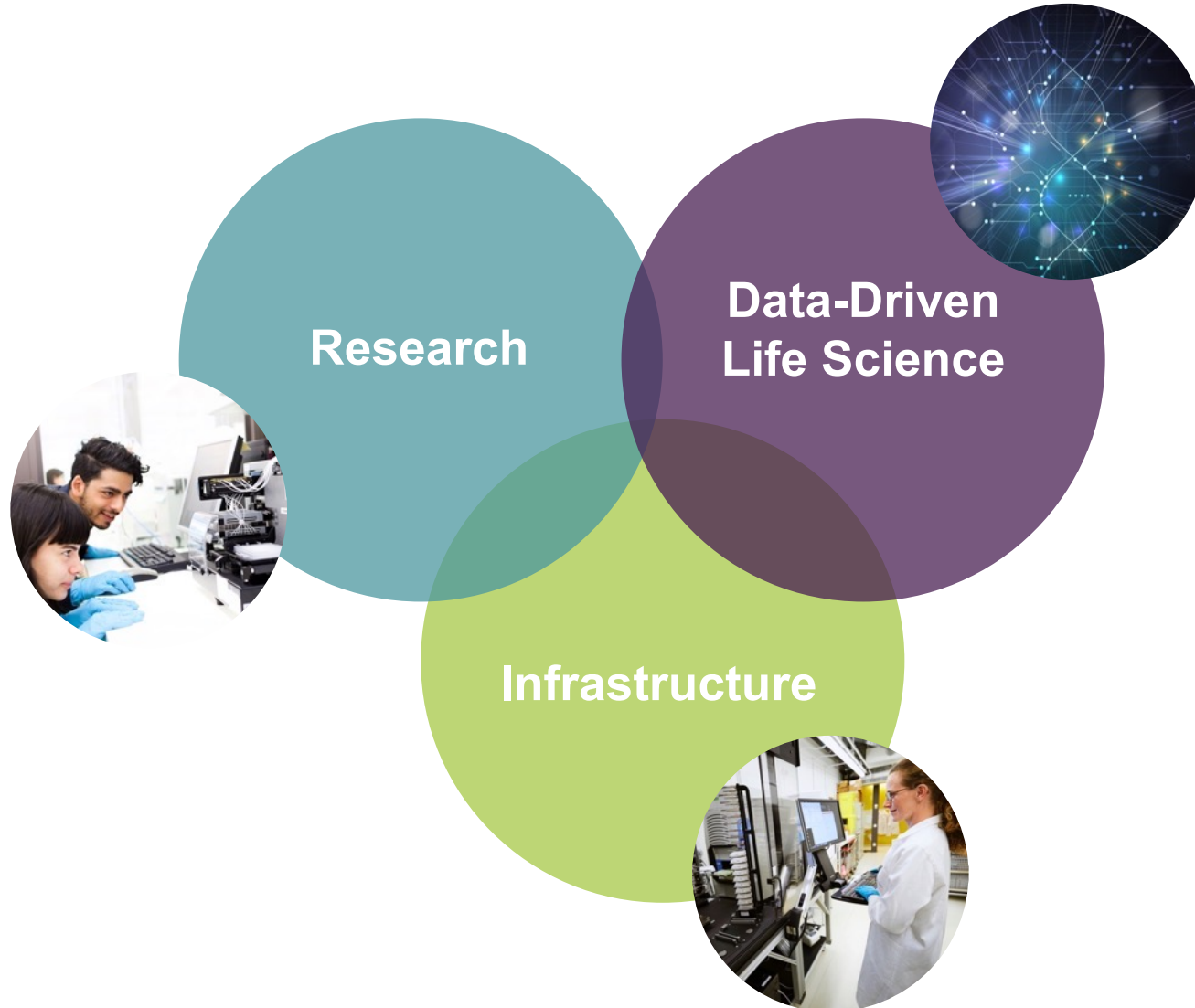


A National Research Infrastructure



- **Unique government-funded** national research infrastructure
- Started in 2010 by Karolinska Institutet, KTH Royal Institute of Technology, Stockholm University and Uppsala University.
- Today, activities at **all major Swedish universities.**

The Dimensions of SciLifeLab



The Dimensions of SciLifeLab



Research environment

- ~190 affiliated research groups
- 400+ SciLifeLab Group Leaders
- Broad range of science fields



Infrastructure

- 10 technology platforms
- 40 research units
- 1400+ users
- 3000 projects/year
- ~500 technology experts



Data-Driven Life Science

- Accelerating paradigm shift
- 4 strategic research areas
- Recruiting global talent
- Academic and industry PhD and postdoc programmes
- Collaboration, innovation, interdisciplinary science

Capabilities



Planetary Biology



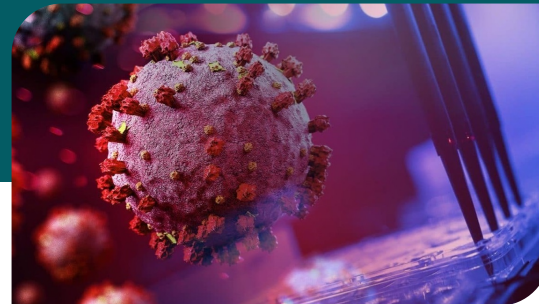
- Trans-disciplinary and coordinated approaches to study life on earth.
- Broad scope ranging from single molecules and cells to species, species communities, and ecosystems.
- Simply speaking "Life in environmental context".



Pandemic Laboratory Preparedness



- World-class capabilities for analyzing and inhibiting COVID-19 at the molecular, cellular, patient, population and environmental level.
- Launching several initiatives with focus on promoting national collaborations and open data sharing.



Precision Medicine



- Patients can benefit from personalized treatments, tailored for their specific molecular disposition.
- Bring technologies and expertise to hospitals, building the foundation of tomorrow's data-driven precision medicine.
- Contributing to evidence-based, equal healthcare.



SciLifeLab Lund



A hub for **multi-level collaborations**
for SciLifeLab and other key stakeholders in Lund.

Who we are



Markus Heidenblad
Site Director

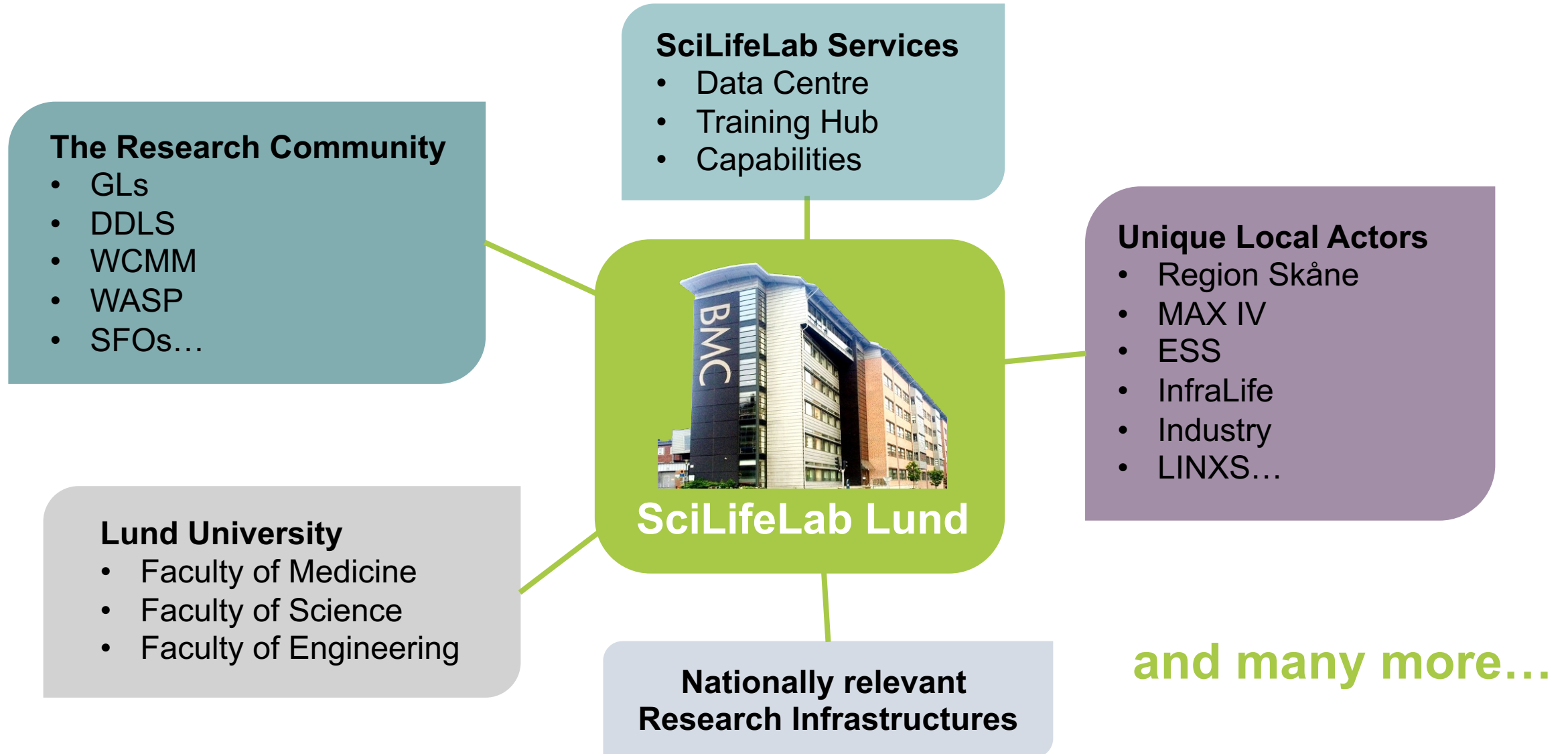


Esther González-Padilla
Site Coordinator

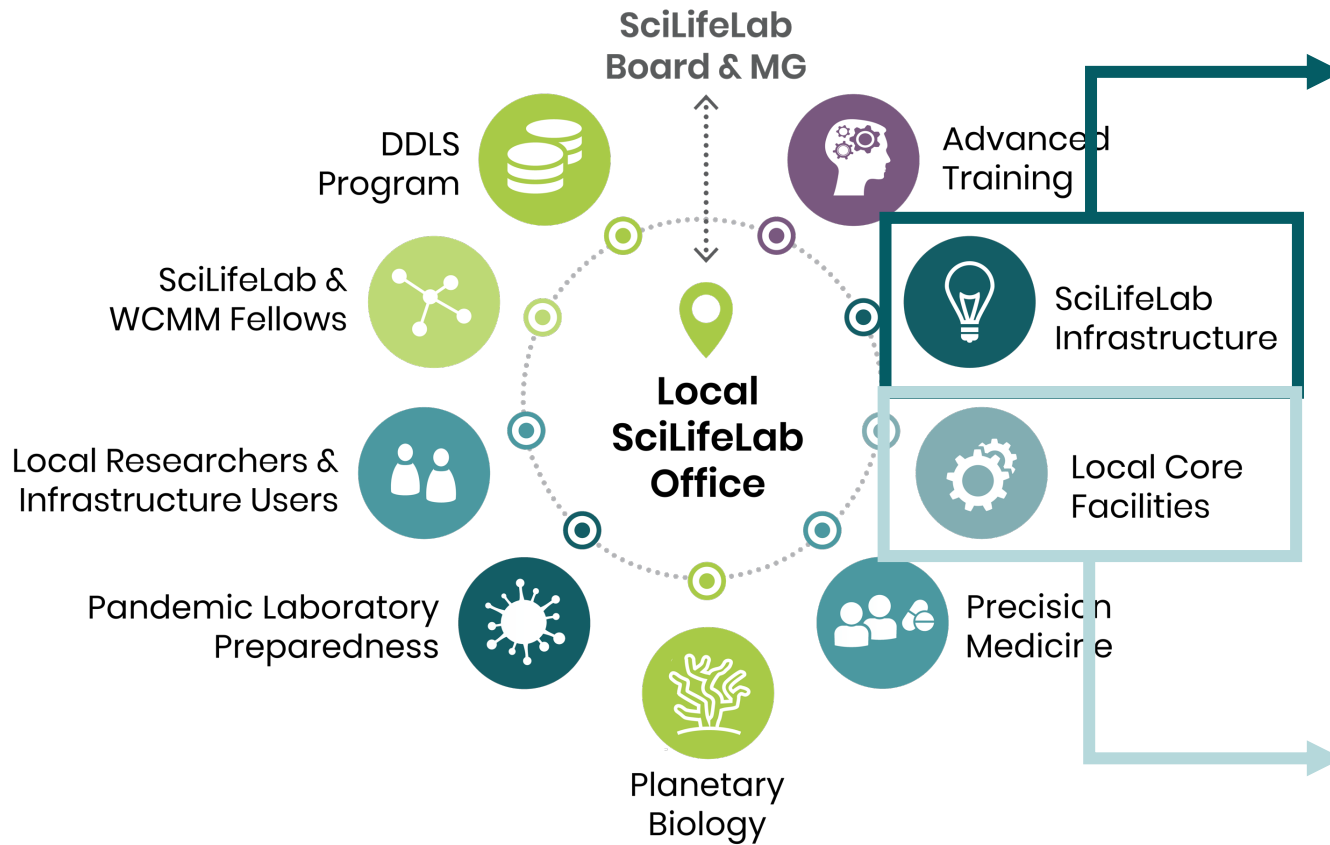
Where to find us



SciLifeLab Lund: Collaborators



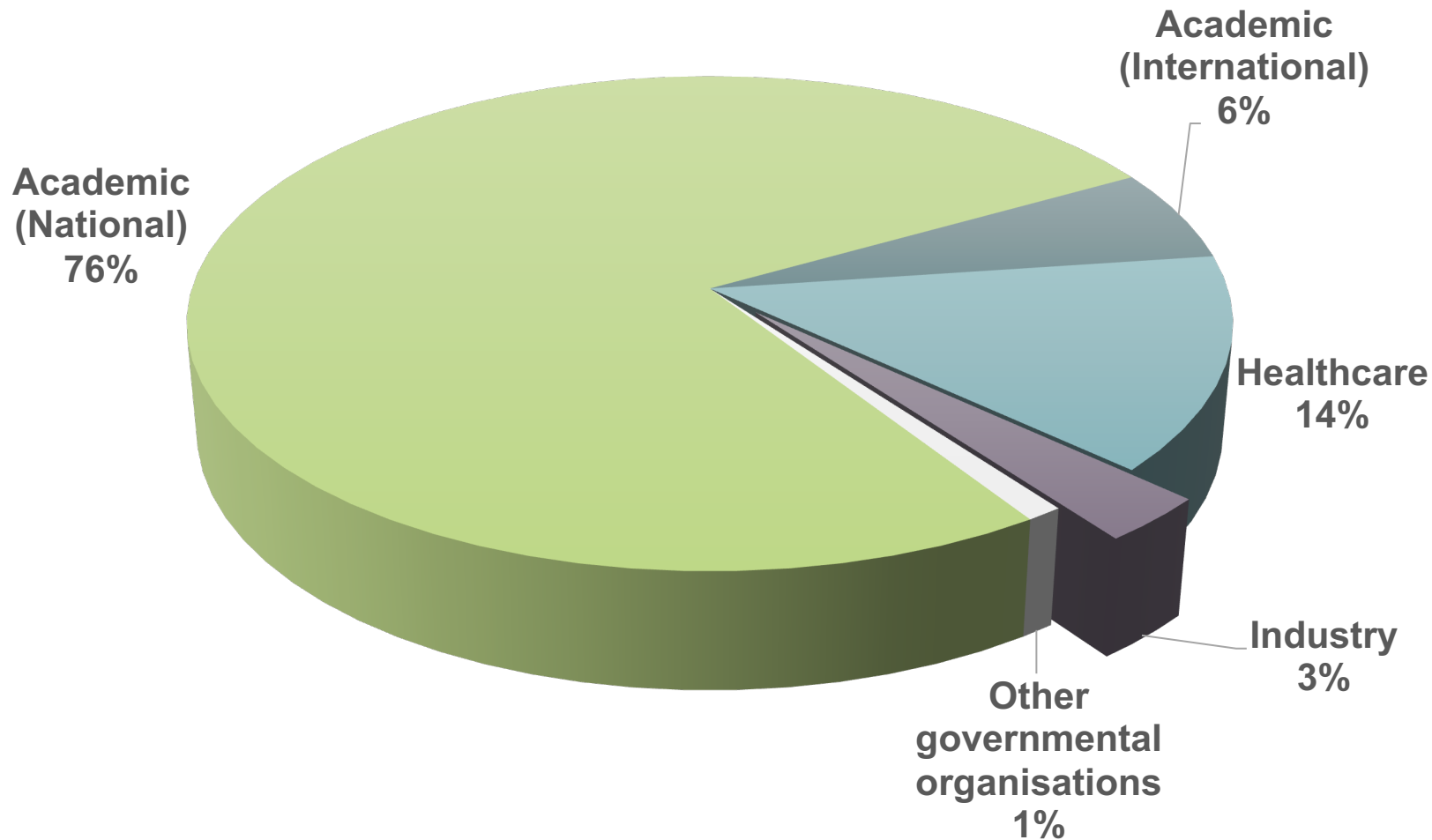
SciLifeLab Lund: Infrastructure



- National Bioinformatics Infrastructure Sweden (NBIS).
- Clinical Genomics Lund.
- Cryo-Electron Microscopy (Cryo-EM).
- Chemical Biology Consortium Sweden (CBCS) Lund node.
- Structural Proteomics.
- Human Antibody Therapeutics.

- Biological Mass Spectrometry (BioMS).
- Lund Bioimaging Center (LBIC).

Distribution of SciLifeLab Users (2022)



> 100 unique interactions*
between SciLifeLab and
Life Sciences Industry

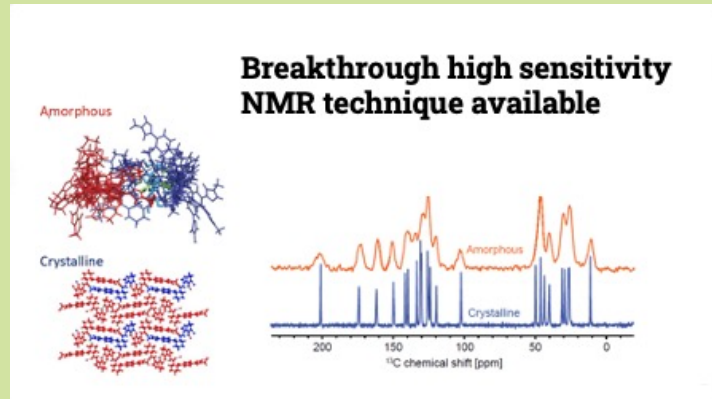
*infrastructure users or collaborations

Industry users, examples



Astra Zeneca & SciLifeLab NMR center

[Link to article](#)



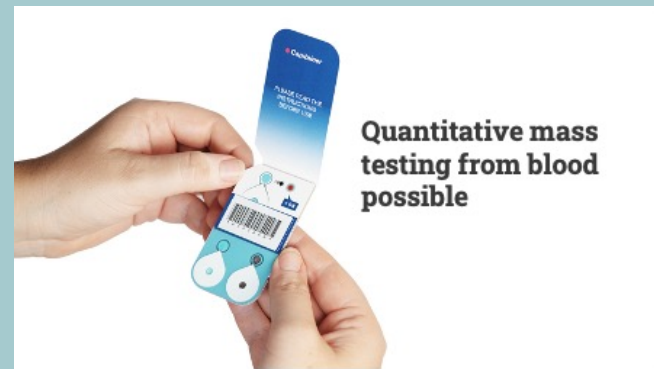
Countagen & SciLifeLab CRISPR functional genomics

[Link to article](#)



[Link to article](#)

Capitainer & SciLifeLab Affinity Proteomics



[Link to article](#)

Key2Brain & SciLifeLab Drug Discovery and Development + National Bioinformatics Infrastructure Sweden (NBIS)

SciLifeLab Lund

<https://www.scilifelab.se/contact/scilifelab-lund>



Contact us:

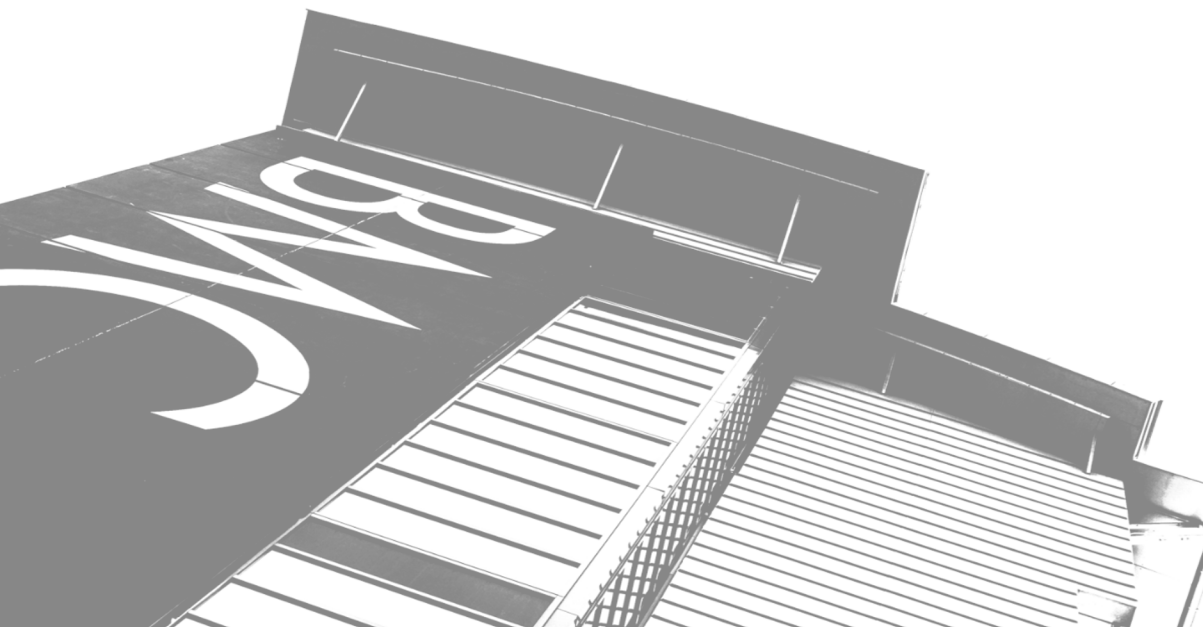
Markus Heidenblad, *Director.*

markus.heidenblad@scilifelab.se

Esther González-Padilla, *Coordinator.*

esther.gonzalez-padilla@scilifelab.se

Visit us: BMC D14, Klinikgatan 32, Lund



SciLifeLab Day Lund

Scan for more info
& registration



<https://www.scilifelab.se/event/scilifelab-day-lund/>

A purple-themed promotional graphic for SciLifeLab Day Lund. It features the SciLifeLab logo (a green stylized 'S' with three dots) and the LUND UNIVERSITY logo (a circular seal with a figure and the text 'SIGILLUM UNIVERSITATIS LUNDAE 1829'). The text 'SciLifeLab Day Lund' is in green, and '28.SEP.2023' is in large white letters. A green cursive script says 'Registration now open!'. There are three circular inset images: a modern building with a large 'S' logo, a red brick building with a clock tower, and a white building with a fountain. At the bottom, two circular portraits are shown: Markus Heidenblad, Site Director, and Esther González-Padilla, Site Coordinator. A LinkedIn icon is also present with the text 'Follow us on LinkedIn SciLifeLab Lund'.